

4.391

Special Problems in Visual Arts

15 November 2004

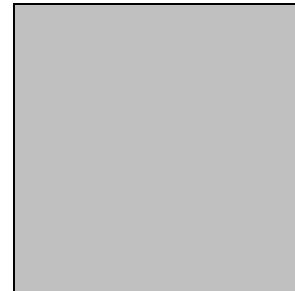
Elliot Felix

Matt Laibowitz

Marie Law

Nic Rader

James Forren



## **A description of the object to be produced:**

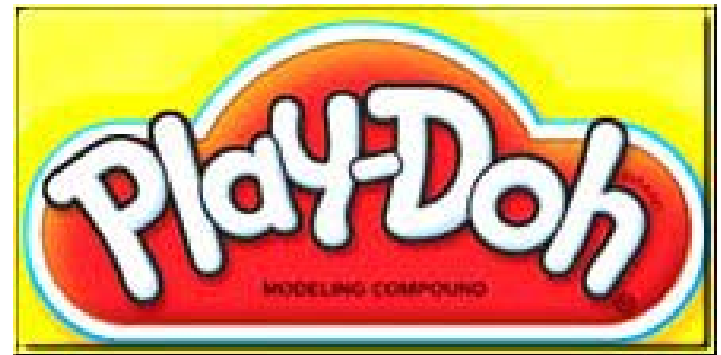
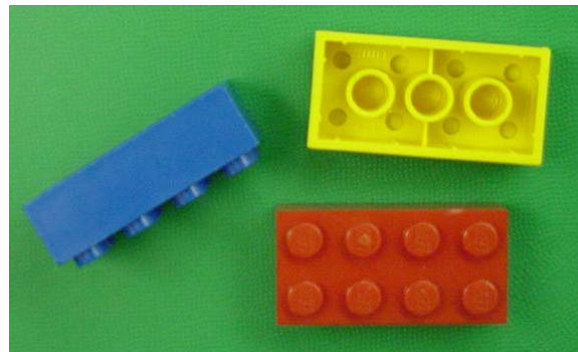
An abstract figure whose shape/form/meaning are initially unknown/indeterminate but then become significant in that a visitor can contribute to an assemblage or larger sculptural object begun by previous visitors and this contribution may register the influence of the visited exhibit, reflect personal choice, etc...

## Diagrams of how the object might look:

To be determined based on input from List Visual Arts Center.

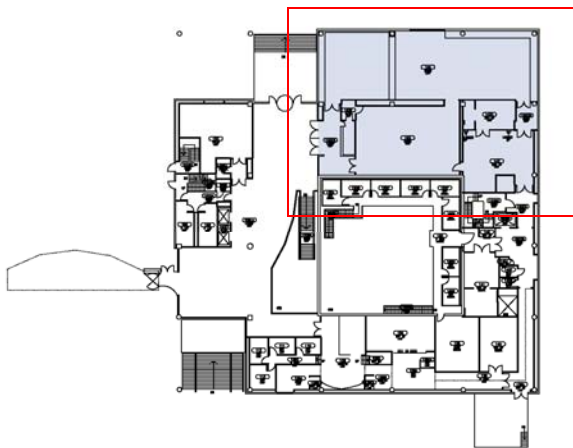
Possibilities include:

- clay/play-doh in a container (potentially with an initial shape)
- building block-esque object (ie: lego, magnetic cube, etc....)
- flat magnets that could be layered.



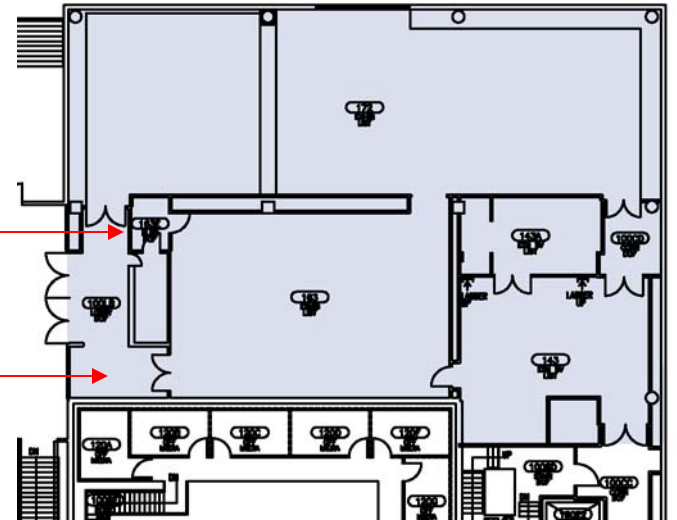
## Diagrams of how and where a report on the final project might be presented and demonstrated visually in a public "display":

The project itself is the presentation/demonstration, including a display of the objects upon entry and different assembly sites (ie: pedestals) at the end of the exhibit.



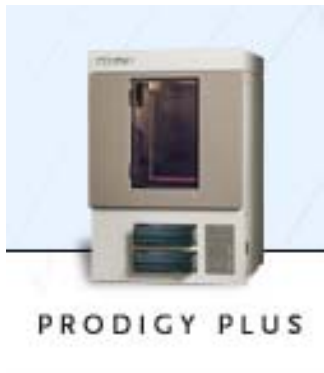
get objects here

leave objects here



## A description of the production methods to be used to produce the object:

Production is object-dependent (ie: cast cube with embedded magnets, 3d-printed mold for clay or casting, laminated plastic magnets, etc...)



**A description of how the budget will be spent:**

Materials and Fabrication

**A description of what "community" (or communities) you are addressing with your proposed project:**

List Visual Arts Center and its patrons/visitors



**A description of how your project benefits or fulfills needs of the community (or communities) that receive it (i.e., "meaning"):**

- contributes to the experience of the exhibit
- provides potential abstract feed-back mechanism
- potential souvenir/collectable
- creates connection between museum as a institution and visitors

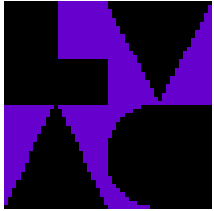


**A description of how community support might be engaged in order to facilitate the project :**

To be determined based on conversation with List Visual Arts Center. Potential examples of support include:

- providing space for distribution and assemblage of objects
- possible documentation of project).

## A list of possible institutions or groups to approach for involvement:



List Visual Arts Center

- Hiroko Kikuchi – Education/Outreach  
Coordinator
- Jane Faver – Director
- Bill Arning – Curator

**A description of a public relations plan (i.e., how to make the project known):**

- Presentation materials for proposal to List Visual Arts Center
- The object itself is PR mechanism as a keepsake and through word of mouth as visitors recount experiences within the museum
- Explanatory Message at Distribution and Assemblage Sites (may not be textual)

**A description of how the group plans to delegate the tasks amongst itself:**

- James: Pitch to List
- Nic: Design and Fabrication
- Marie: Design
- Elliot: Design and Fabrication
- Matt: Presentations materials for List pitch and Fabrication